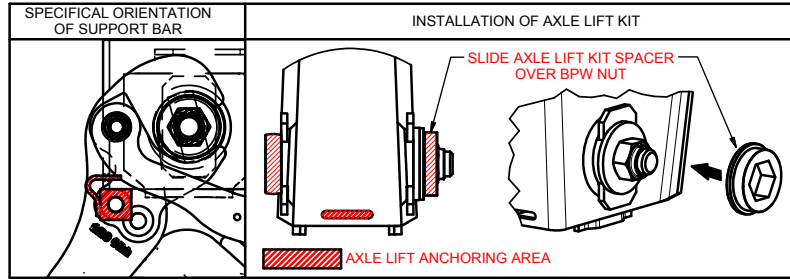


AXLE LIFT

BPW AIRLIGHT II - M24 PIVOT BOLT

AL-476-DOC

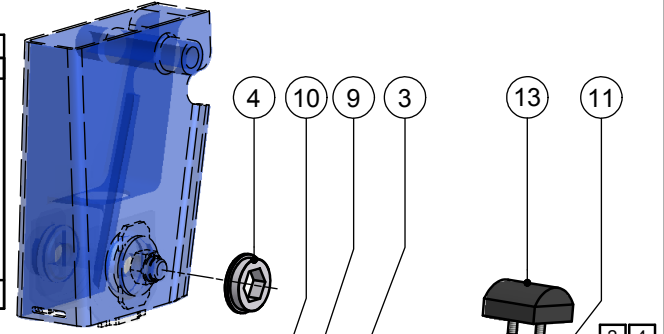
This Weweler Bolt-On axle lift is developed for the BPW Airlight II air suspension range with M24 pivot bolt (only for steel hanger bracket). Valid from 01-09-2007. Suitable for ALU / ALO / ALM / ALMT suspensions. For steering axles ***LL please check with Weweler This lift can also be used on the bolted bracing.



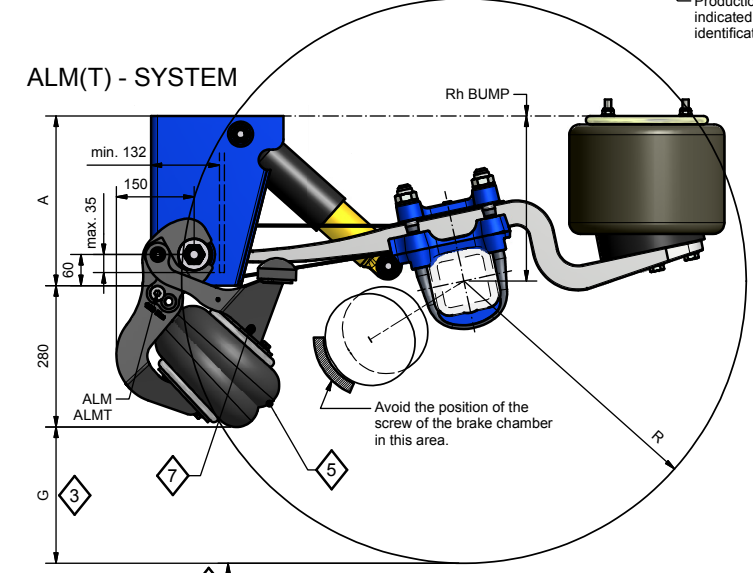
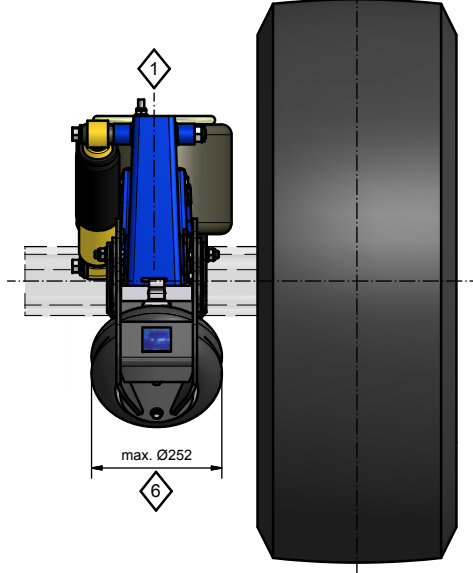
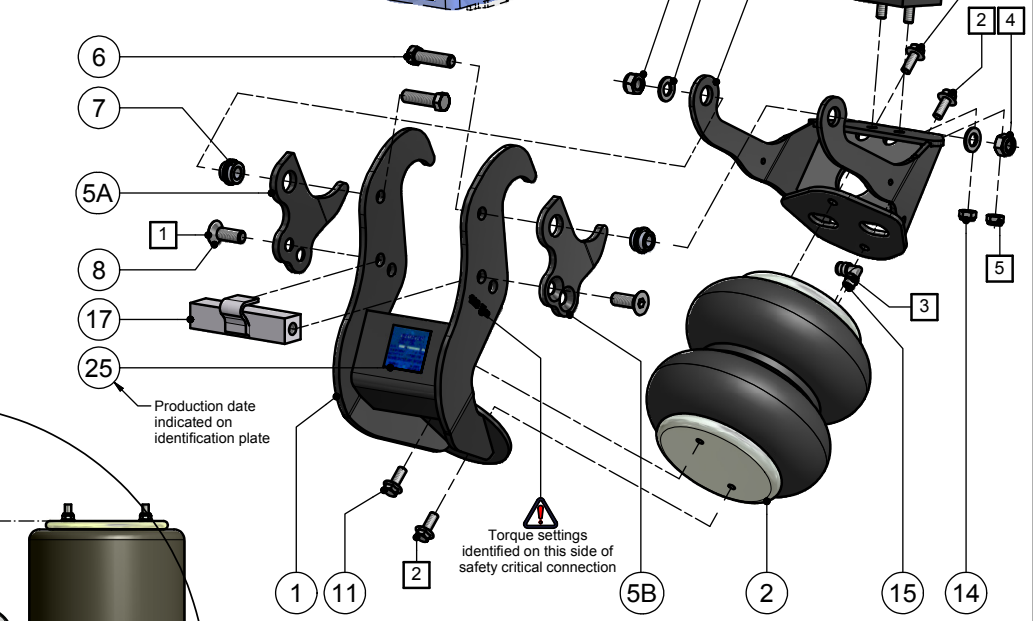
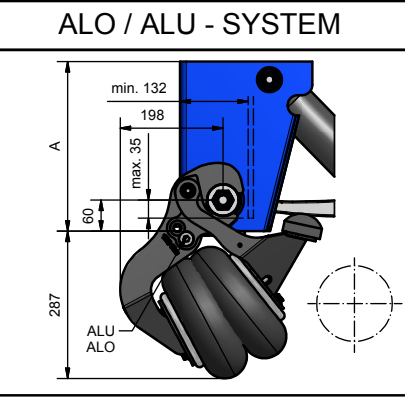
AXLE LIFT IS RELEASED FOR THE FOLLOWING BPW SYSTEM SHEETS

SHEET	REVISION	SHEET	REVISION
AL II-SB.0 - BI.-Nr. 1	Rev. 2 - 03.09.07	AL II-SN.0 - BI.-Nr. 1	Rev. 2 - 29.02.08
AL II-SB.0 - BI.-Nr. 1a	Rev. 1 - 03.09.07	AL II-SN.0 - BI.-Nr. 2	Rev. 2 - 29.02.08
AL II-SB.0 - BI.-Nr. 2	Rev. 2 - 03.09.07	AL II-SN.0 - BI.-Nr. 8	Rev. 3 - 29.02.08
AL II-SB.0 - BI.-Nr. 2a	Rev. 1 - 03.09.07	AL II-SN.0 - BI.-Nr. 9	Rev. 3 - 29.02.08
AL II-SB.0 - BI.-Nr. 8	Rev. 4 - 03.09.07	AL II-SN.0 - BI.-Nr. 15	Rev. 2 - 29.02.08
AL II-SB.0 - BI.-Nr. 8a	Rev. 2 - 03.09.07	AL II-SN.0 - BI.-Nr. 15b	Rev. 1 - 29.02.08
AL II-SB.0 - BI.-Nr. 9	Rev. 4 - 03.09.07	AL II-SN.0 - BI.-Nr. 16	Rev. 2 - 29.02.08
AL II-SB.0 - BI.-Nr. 9a	Rev. 2 - 03.09.07	AL II-SN.0 - BI.-Nr. 16b	Rev. 1 - 29.02.08
AL II-SB.0 - BI.-Nr. 15	Rev. 2 - 03.09.07		
AL II-SB.0 - BI.-Nr. 15a	Rev. 1 - 03.09.07		
AL II-SB.0 - BI.-Nr. 16	Rev. 2 - 03.09.07		
AL II-SB.0 - BI.-Nr. 16a	Rev. 1 - 03.09.07		

FOR ALU & ALMT SYSTEMS ALWAYS CHECK AL-476-APP FOR TYRE POSSIBILITIES



- EXPLANATION**
- 1 Assemble lefthand and righthand side.
 - 3 Groundclearance G at full axle up travel (loaded without pressure) depends on the airsuspensionsystem and the type of tires. (always check)
 - General:
 - 4 The clearance between the road and the tire when the axle is lifted = axle up travel minus deformation of the tires.
 - 5 Not lifted: pressure = 0 bar. Max. operating pressure = 8 bar.
 - 6 The airspring is not allowed to hit any other parts. Keep a free diameter of 280 mm for moving parts.
 - 7 Air-connection (standard 8 mm push-in fitting)



TORQUE

Fastener	Torque [Nm]	Tolerance [Nm]
1 Support Bar	(M14) 120	± 10
2 Air Spring	(M10) 30	± 5
3 Airconnection	(G1/4") 20	± 5
4 Pivoting point upper support	(M14) 100	± 10
5 Rubber Bump	(M10) 30	± 5



THIS DOCUMENT IS PROPERTY OF VDL WEWELER B.V. COPYING, ANNOUNCING, OR GIVE A THIRD PARTY PERUSAL OF ANY KIND, IS PROHIBITED WITHOUT APPROVAL OF OWNER

VDL Weweler

VDL WEWELER B.V.
P.O. BOX 142
7300 AC APELDOORN
THE NETHERLANDS

DATE	BY	APP.	PROJECT:
11-3-2010	RTS		WAP09-117
8-9-2010	RTS		WAP09-117

DOC.NR: WE0018504

REV:

UNCONTROLLED COPY
NO RIGHTS CAN BE CLAIMED FROM THIS DOCUMENT